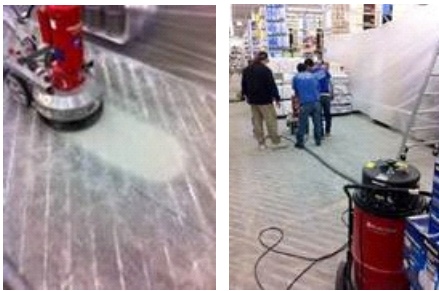


## Recommended Floor Prep & Equipment

CSP (concrete surface profile) - International Concrete Repair Institute (ICRI) developed benchmark guidelines referred to as CSP—a measure of the average distance from the peaks of the surface to the valleys. They range from CSP 1 (nearly smooth finish) to CSP 9 (very rough).

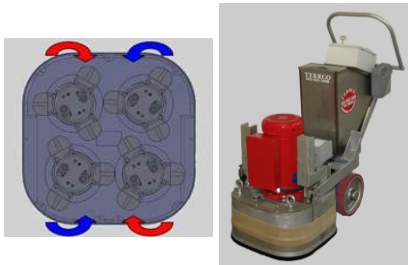
A light sand will not achieve CSP 1. A light grind will, and with a CSP 1 (similar to 220grit sandpaper) provide the necessary degree of porosity to allow penetration of the adhesive for reactive bond. At the BBB in San Diego we recently repaired the floor using this technique. Initially the contractor used a sanding disk that was insufficient. Once the grind was employed the difference was remarkable. Flat, smooth with little or no required skim coat repair. Below is the Blastrac grinder in use over the previously sanded floor. Notice the sander did not lift the alkali halo from the former floor but the grinder did. Aquaflex has a typical spread rate of 600sf/unit with properly prepared concrete. If the concrete is not smooth then the trowel will bridge low spots on the surface and created glue lumps reducing coverage significantly (<600sf/unit) and telegraphing the bumps to the surface. These bumps will appear like random edge lift. Always skim any areas receiving hand grind. Remember, all grinding tools should have a dust shroud for vacuum attachment or for smaller projects a good vacuum following grind. Dust is substrate and should be treated like a contaminant.

**Grind equipment will require 115v/15A minimum. Retail space is typically 110v. Make sure an axillary source of adequate power is available.**



Pictured at left is an 18" Blastrac single planetary grinder. It's additionally referred to as a "passive" planetary tool because the grind bit is fixed to a disk that rotates in only one direction. Passive machines tend to be less efficient in thorough dust removal.

**NOTE:** Aquaflex should never be used to level a poorly prepared concrete surface. Proper floor prep will virtually eliminate the requirement for cementitious topping. Aquaflex Patch Mix is provided in order to smooth out areas around door jams and wash-outs as well as fix gouge marks and other light surface defects. Use Aquaflex Self Level for any defects due to poor substrate condition that may require 1/4" to 1/2" thickness.



A variation on this design is made by Terrco. This machine has 4 fixed disks rotating in opposing direction. The Terrco equipment is also available in a propane powered set-up. All of the equipment mentioned is shrouded for dust collection with attached vacuum filtration to avoid damage to HVAC units.



EDCO is another manufacturer with a design that comes in multiple disk configuration. Pictured at left is their gas-powered model. This machine is similar to Terrco in its rotational grind set-up. EDCO machines, like most of the rest have interchangeable bit tools that offer grind as well as adhesive removal. **Grinding bits should never be used for adhesive removal.** If the adhesive is soft, a removal tool like EDCO's Strip-Serts are recommended. Sunbelt rents the dual head machine for \$135.00/day. This machine is used for repair work in small spaces and should never be the choice for a project in excess of 5,000sf.



Machines manufactured by HTC and Husqvarna represent the latest designs in grind equipment and are referred to as "active" planetary tools. This tool has the fixed bit disk attached to a secondary disk that runs counter in direction to the bit disk. Active planetary tools can provide exceptionally clean surface prep. The bi-directional grind will lift the dust particle from the surface allowing for a more efficient vacuum removal. This equipment should be the choice for complete store installations.